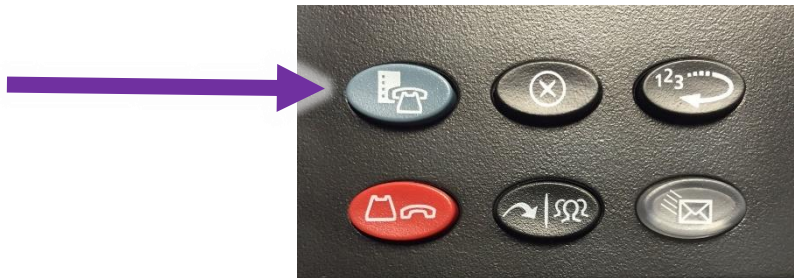


How to set a Programmable Key for using a Headset

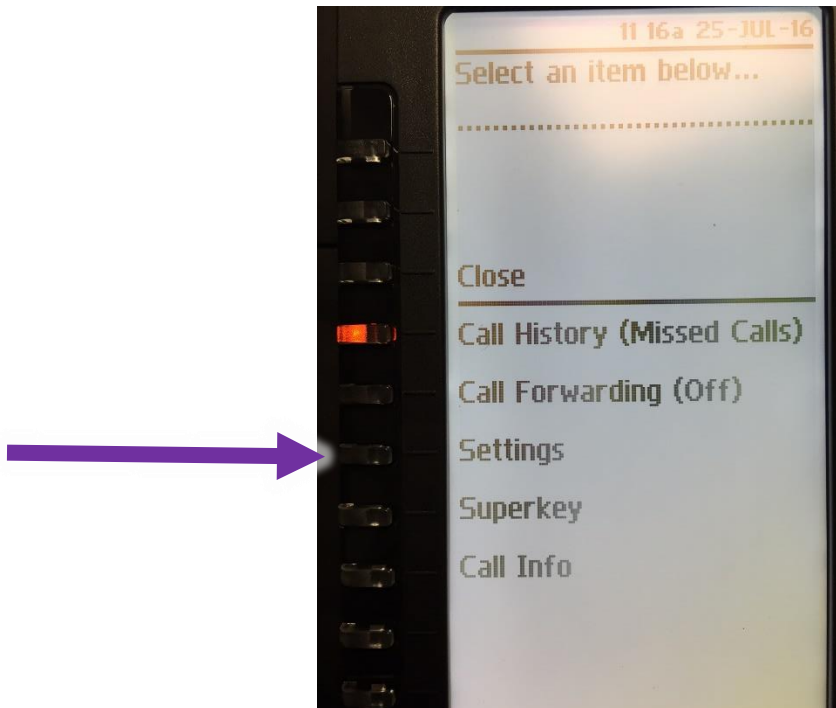
Photos from a Mitel 5320e IP Phone

If you'd like to use a headset with your VoIP phone, you'll need to set a programmable key.

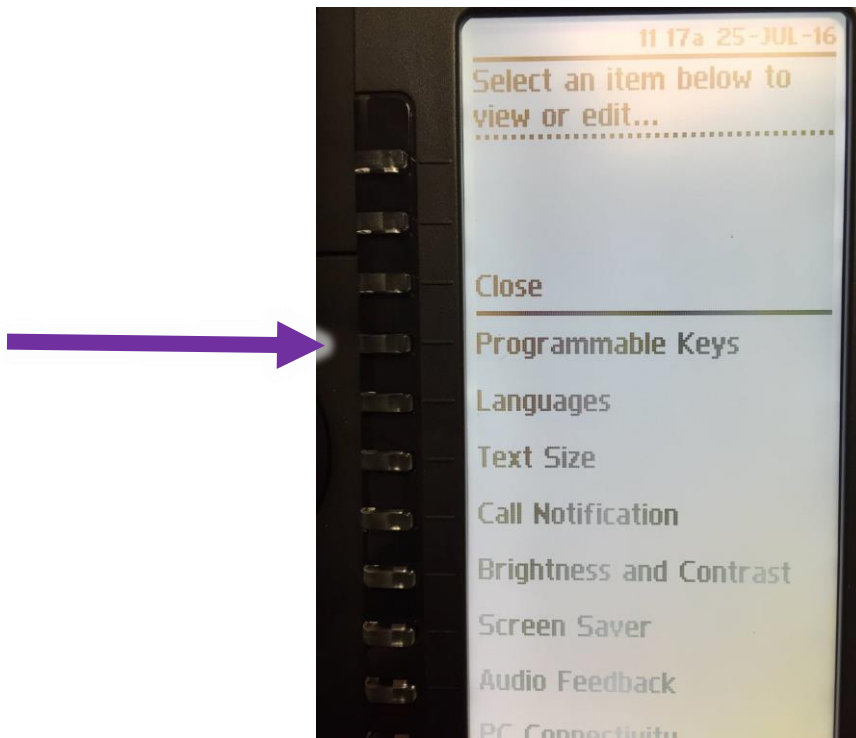
Step 1: Press the blue **Menu** button.



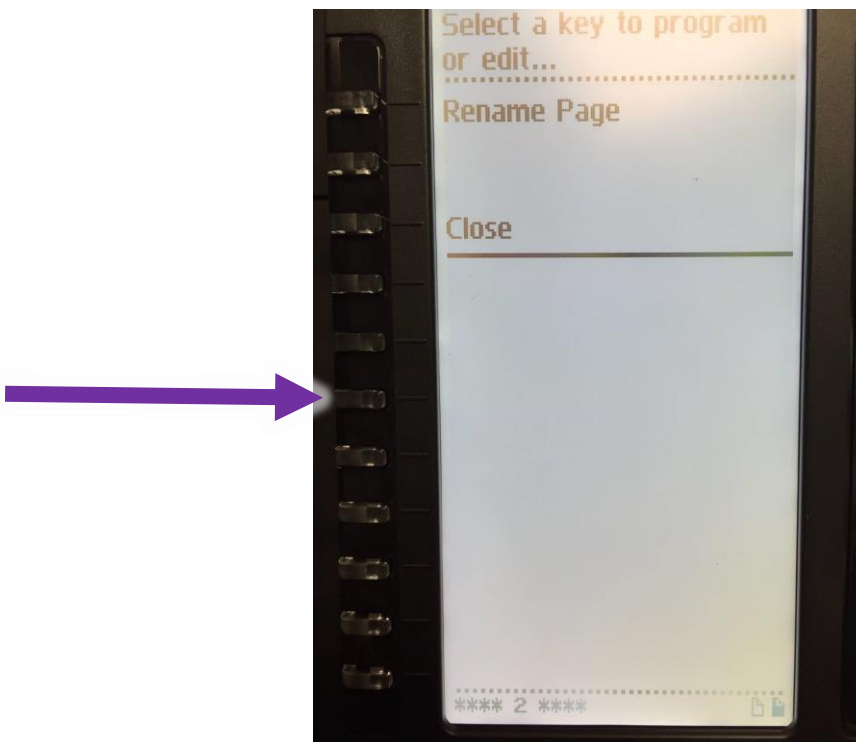
Step 2: Select "Settings" from the display.

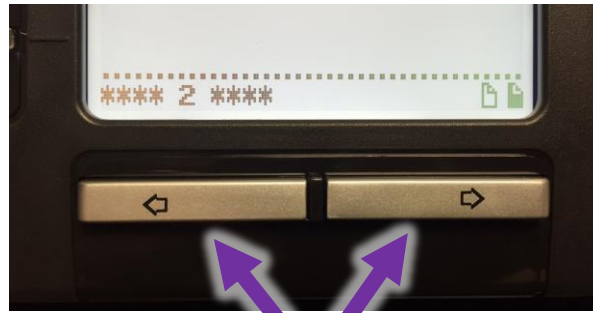


Step 3: Select "Programmable Keys" from the display.



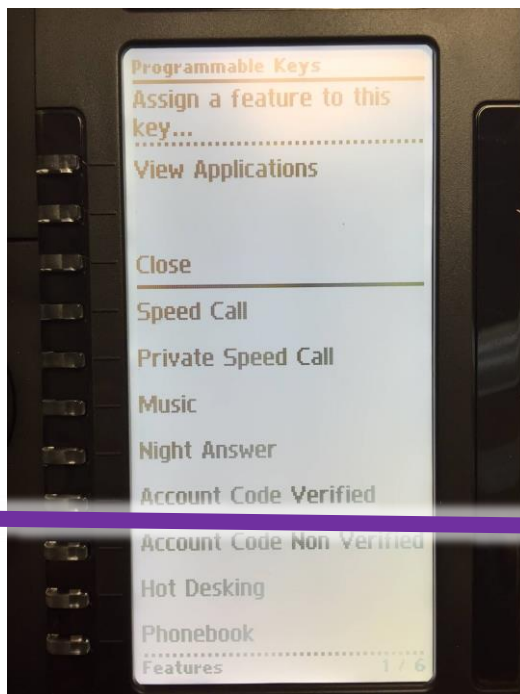
Step 4: Choose one of your blank keys to use as the button you'd like for your headset (if you are out of room on your primary screen, use the arrow buttons below the display to scroll to the second page).



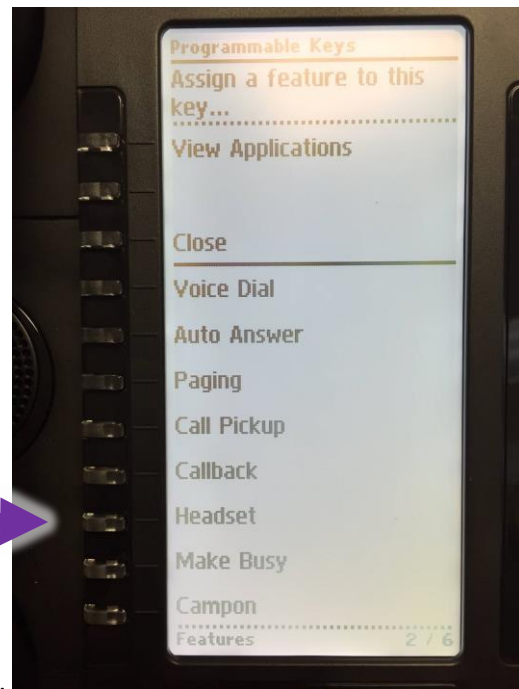


(scroll buttons)

Step 5: Scroll through the feature options to find and select the Headset entry.

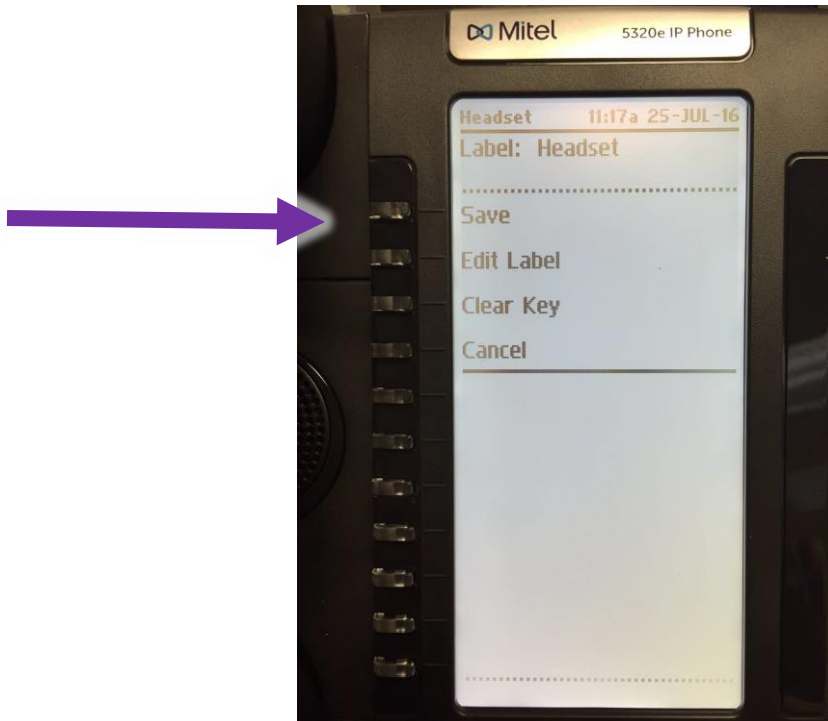


a.

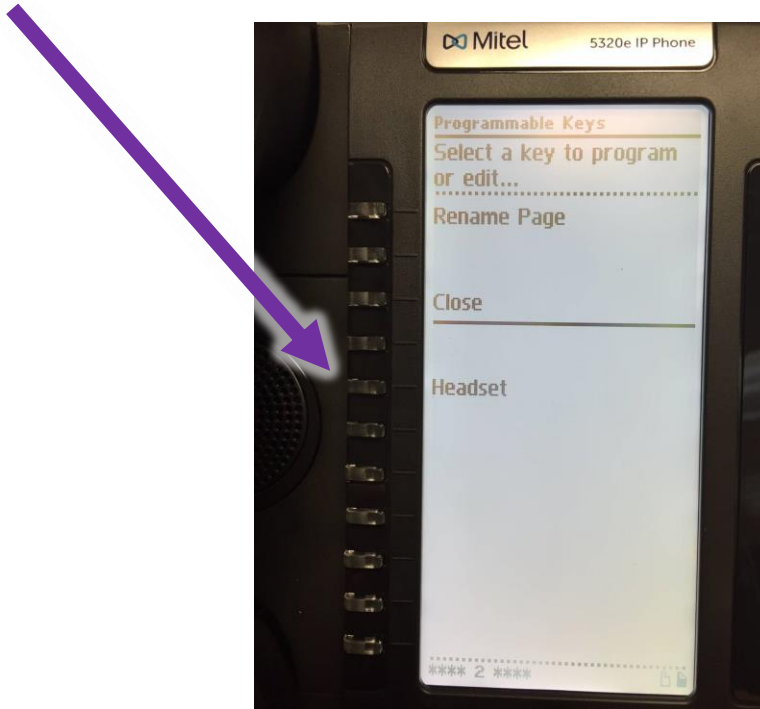


b.

Step 6: Select "Save"



Step 7: Notice that your chosen button is now labeled.



Step 8: Select "Close" to exit the Programmable Key options, and "Close" again to exit the main menu.